



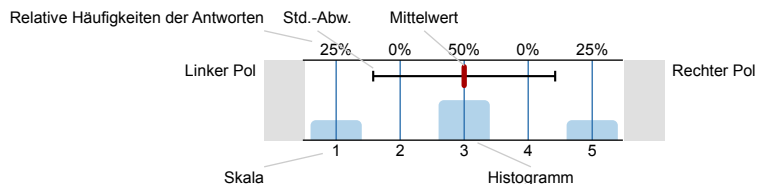
Vergleichszahlen

SPL040-FB1-W14 ()
Erfasste Fragebögen = 123

Auswertungsteil der geschlossenen Fragen

Legende

Frage-
text



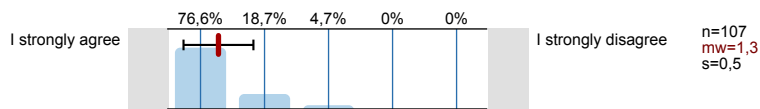
n=Anzahl
mw=Mittelwert
s=Std.-Abw.
E.=Enthaltung

1. University wide section

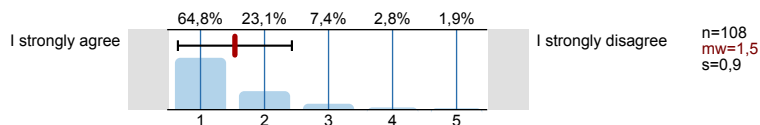
1.1) Gender:



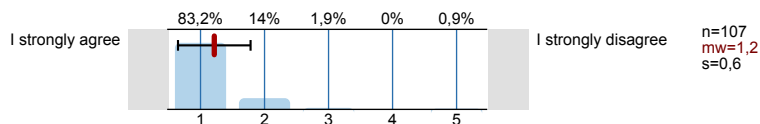
1.2) The contents of the course were very interesting.



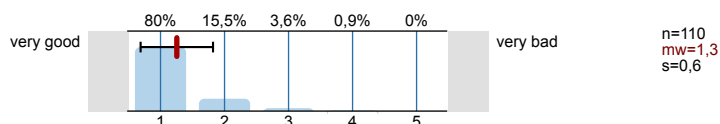
1.3) This particular course was very important in its contribution towards reaching the goals of the academic program.



1.4) The lecturer was motivating.

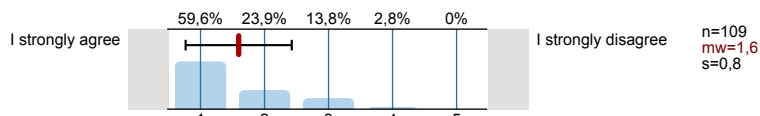


1.5) Overall, I would rate the course as

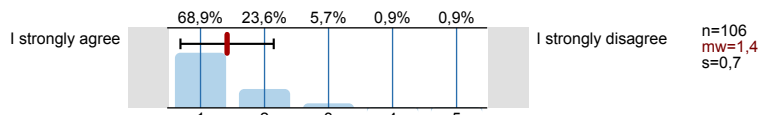


2. Questions from the director of studies

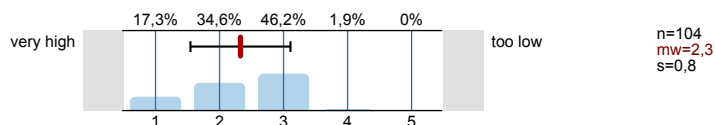
2.1) The course is well-organised.

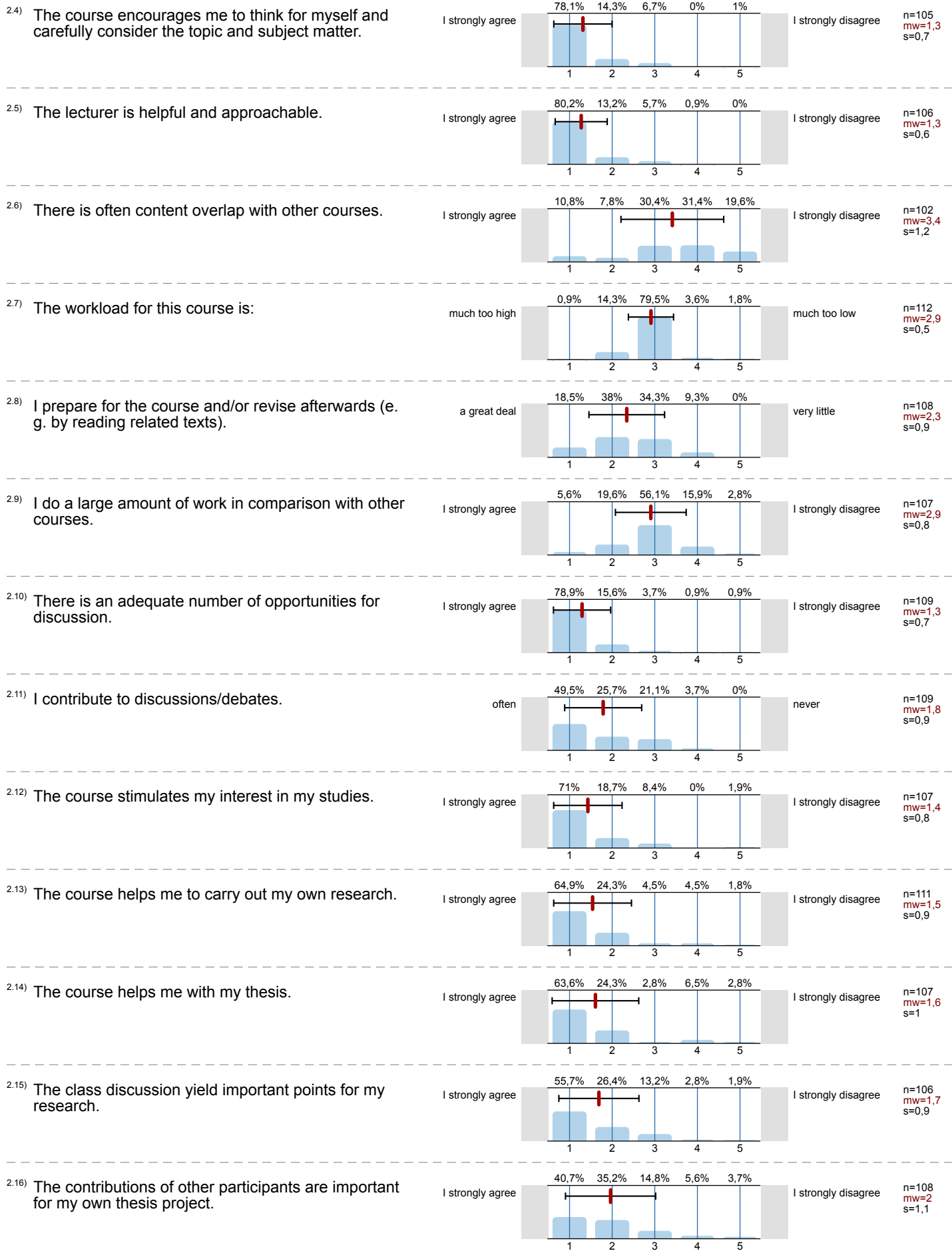


2.2) The course communicates the meaning and significance of the topics covered.

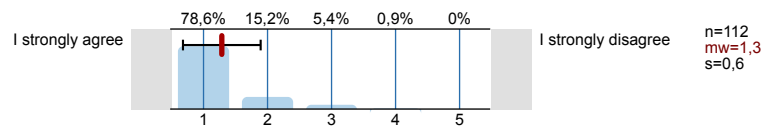


2.3) The level of prior knowledge needed to follow the course is:





2.17) The lecturer encourages debate about the research of all the course participants.

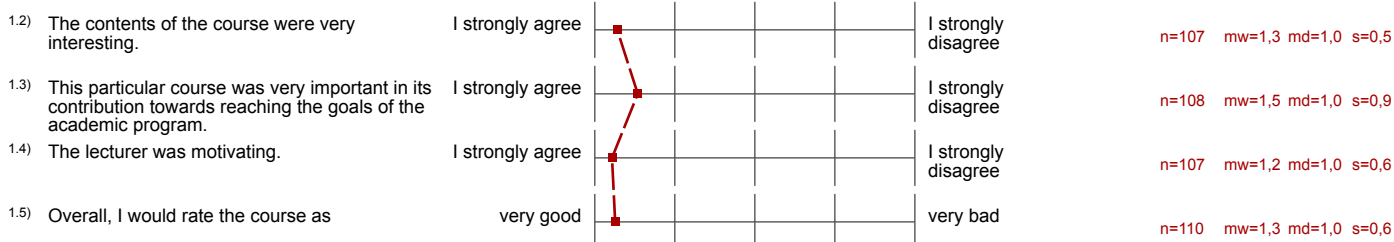


Profillinie

Zusammenstellung: SPL040-FB1-W14

Verwendete Werte in der Profillinie: Mittelwert

1. University wide section



2. Questions from the director of studies

