



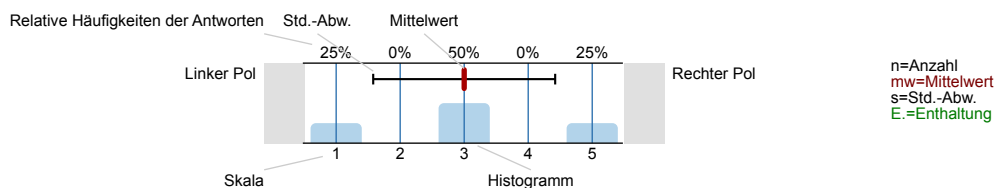
SPL012-FB1-17S

Erfasste Fragebögen = 3522

Auswertungsteil der geschlossenen Fragen

Legende

Frage**text**

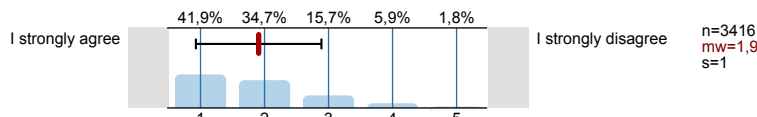


1. University wide section

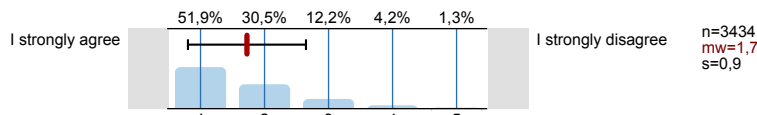
1.1) Gender:



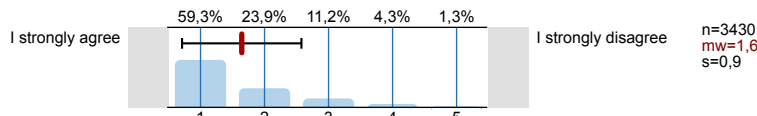
1.2) The course content is very interesting.



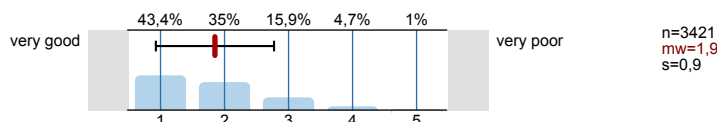
1.3) This particular course contributes to reaching the objectives of the academic programme.



1.4) The lecturer is very motivating.

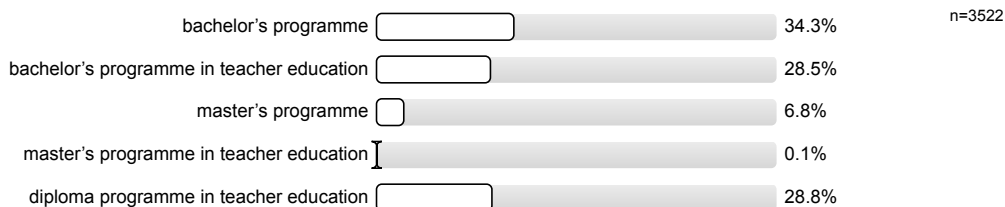


1.5) Overall, I would rate the course as

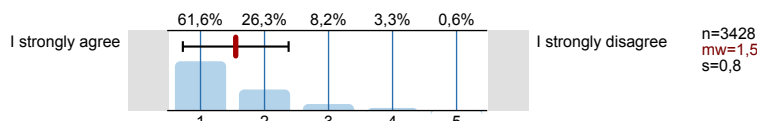


2. Study-related questions

2.1) I am studying in the:

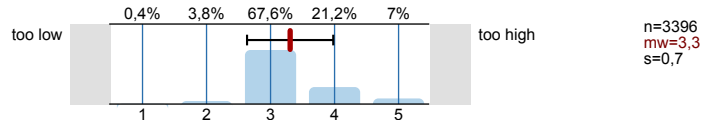


2.2) The objectives, content, methods and assessment criteria were made available in a suitable format.

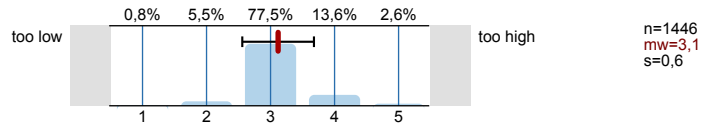




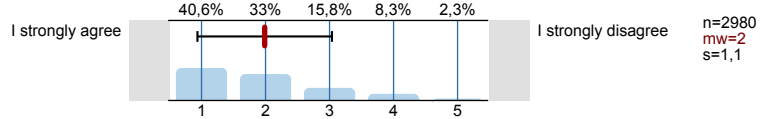
2.16) I find the requirements of the course to be



2.17) Only for lectures: The presentation speed is

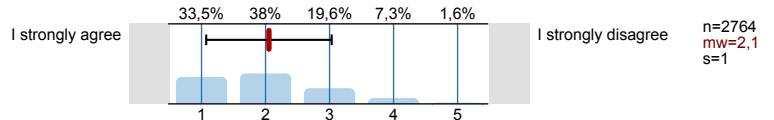


2.18) I learned a lot by attending the course.

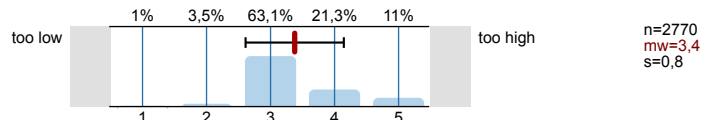


The following 5 questions only apply to courses with continuous assessment:

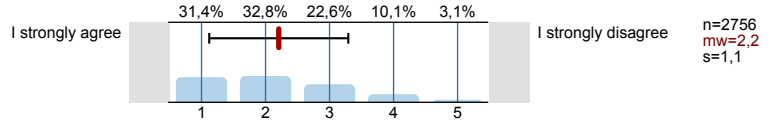
2.19) I have spent sufficient time on preparing for the class and on revising.



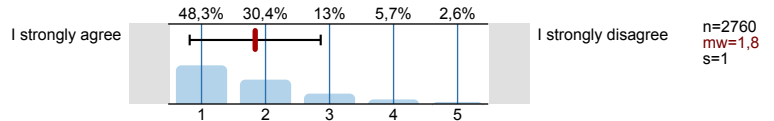
2.20) With regard to the specifications of the curriculum (ECTS credits), the total workload is



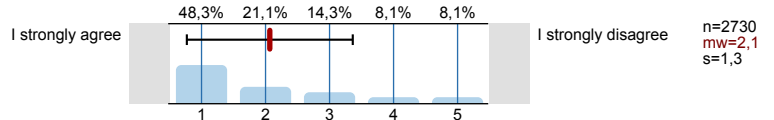
2.21) I actively contribute to the course.



2.22) The type of assessment used (e.g. exam, presentation, essay, etc.) is appropriate.



2.23) I have received feedback on my performance during the semester.



Profillinie

Zusammenstellung: SPL012-FB1-17S

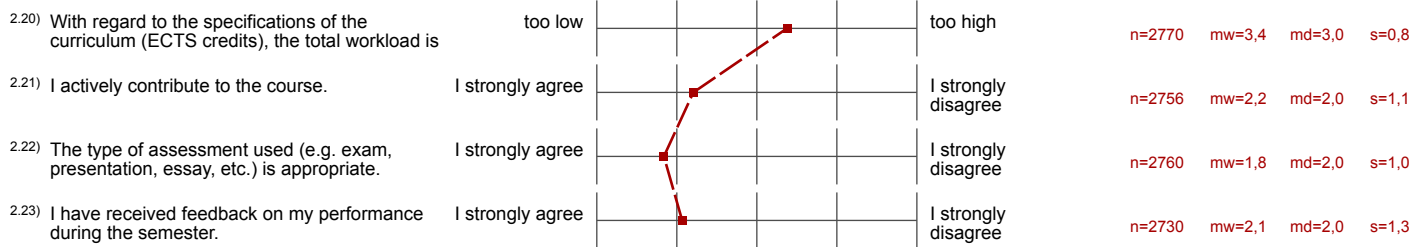
Verwendete Werte in der Profillinie: Mittelwert

1. University wide section

1.2) The course content is very interesting.	I strongly agree		I strongly disagree	n=3416	mw=1,9	md=2,0	s=1,0
1.3) This particular course contributes to reaching the objectives of the academic programme.	I strongly agree		I strongly disagree	n=3434	mw=1,7	md=1,0	s=0,9
1.4) The lecturer is very motivating.	I strongly agree		I strongly disagree	n=3430	mw=1,6	md=1,0	s=0,9
1.5) Overall, I would rate the course as	very good		very poor	n=3421	mw=1,9	md=2,0	s=0,9

2. Study-related questions

2.2) The objectives, content, methods and assessment criteria were made available in a suitable format.	I strongly agree		I strongly disagree	n=3428	mw=1,5	md=1,0	s=0,8
2.3) The course corresponds to the details in the course directory.	I strongly agree		I strongly disagree	n=3394	mw=1,4	md=1,0	s=0,7
2.4) The course is well-organised.	I strongly agree		I strongly disagree	n=3418	mw=1,6	md=1,0	s=0,9
2.5) The course content is well prepared from a didactic point of view.	I strongly agree		I strongly disagree	n=3421	mw=1,7	md=1,0	s=1,0
2.6) Different theoretical approaches are presented and discussed.	I strongly agree		I strongly disagree	n=3394	mw=1,7	md=1,0	s=0,9
2.7) Reference and recommended literature allow me to deepen my knowledge of the subject independently.	I strongly agree		I strongly disagree	n=3394	mw=1,7	md=1,0	s=1,0
2.8) ... is well prepared.	I strongly agree		I strongly disagree	n=3423	mw=1,3	md=1,0	s=0,7
2.9) ... presents the material in an intelligible fashion.	I strongly agree		I strongly disagree	n=3417	mw=1,5	md=1,0	s=0,8
2.10) ... provides competent and intelligible answers to the students' questions.	I strongly agree		I strongly disagree	n=3417	mw=1,4	md=1,0	s=0,8
2.11) ... provides for a productive and pleasant working atmosphere.	I strongly agree		I strongly disagree	n=3431	mw=1,5	md=1,0	s=0,8
2.12) ... is dedicated to teaching.	I strongly agree		I strongly disagree	n=3402	mw=1,3	md=1,0	s=0,7
2.13) ... is fair and correct in his/her dealings with the students.	I strongly agree		I strongly disagree	n=3405	mw=1,3	md=1,0	s=0,7
2.14) ... provides students with the opportunity to ask course-related questions and to seek advice (e.g. in office hours).	I strongly agree		I strongly disagree	n=3407	mw=1,3	md=1,0	s=0,6
2.15) My prior knowledge needed to follow the course is	sufficient		not enough	n=3420	mw=1,8	md=1,0	s=1,0
2.16) I find the requirements of the course to be	too low		too high	n=3396	mw=3,3	md=3,0	s=0,7
2.17) <u>Only for lectures:</u> The presentation speed is	too low		too high	n=1446	mw=3,1	md=3,0	s=0,6
2.18) I learned a lot by attending the course.	I strongly agree		I strongly disagree	n=2980	mw=2,0	md=2,0	s=1,1
2.19) I have spent sufficient time on preparing for the class and on revising.	I strongly agree		I strongly disagree	n=2764	mw=2,1	md=2,0	s=1,0



Auswertungsteil der offenen Fragen

3. Further questions

^{3.1)} What is particularly good about the course?

Es wird keine Auswertung angezeigt, da die Anzahl der Antworten zu gering ist.

^{3.2)} Do you have any suggestions for the improvement of the course?

Es wird keine Auswertung angezeigt, da die Anzahl der Antworten zu gering ist.